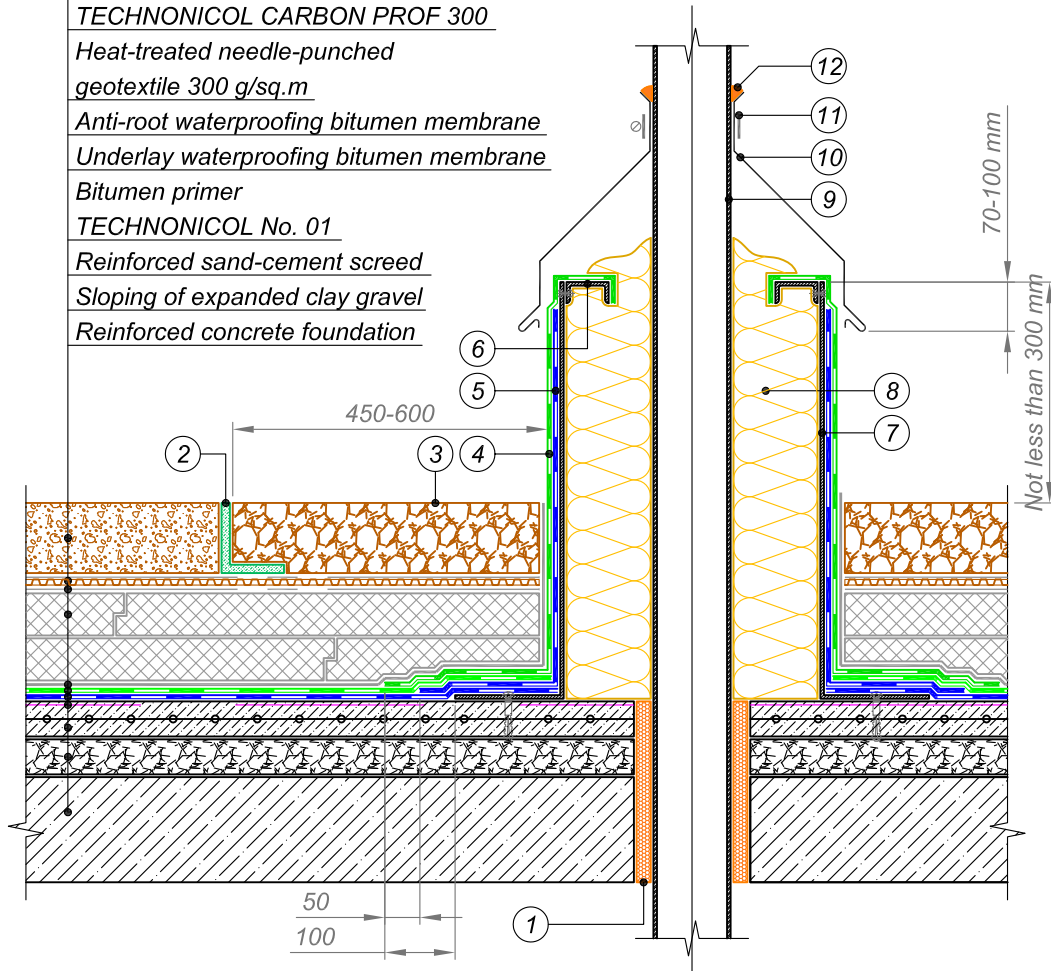




Plant substrate with green planting
Drainage membrane with geotextile
Heat-treated needle-punched geotextile 150 g/sq.m
Extruded polystyrene
TECHNICOL CARBON PROF 300
Heat-treated needle-punched geotextile 300 g/sq.m
Anti-root waterproofing bitumen membrane
Underlay waterproofing bitumen membrane
Bitumen primer
TECHNICOL No. 01
Reinforced sand-cement screed
Sloping of expanded clay gravel
Reinforced concrete foundation



- | | |
|--|--|
| ① Sealing foam | ⑦ Galvanized steel sheet
not less than 3 mm in thickness |
| ② L-shaped plastic element | ⑧ Stone wool thermal insulation
not less than 120 mm in thickness |
| ③ Washed gravel | ⑨ Pipe |
| ④ Cap sheet bitumen membrane | ⑩ Galvanized steel flashing |
| ⑤ Underlay bitumen membrane | ⑪ Compression metal clamp |
| ⑥ Galvanized steel to be
fastened by rivets | ⑫ Polyurethane sealant * |

NOTES

* Polyurethane sealant to be applied at temperatures up to 80°C.
 At high temperatures use specialized high-temperature sealants.

				GREEN ROOF	DESIGN	APPROVED
					SCALE	DATE
REV.	DATE	DESCRIPTION	CHECKED	JUNCTION TO HOT PIPE	DWG No.	REV.