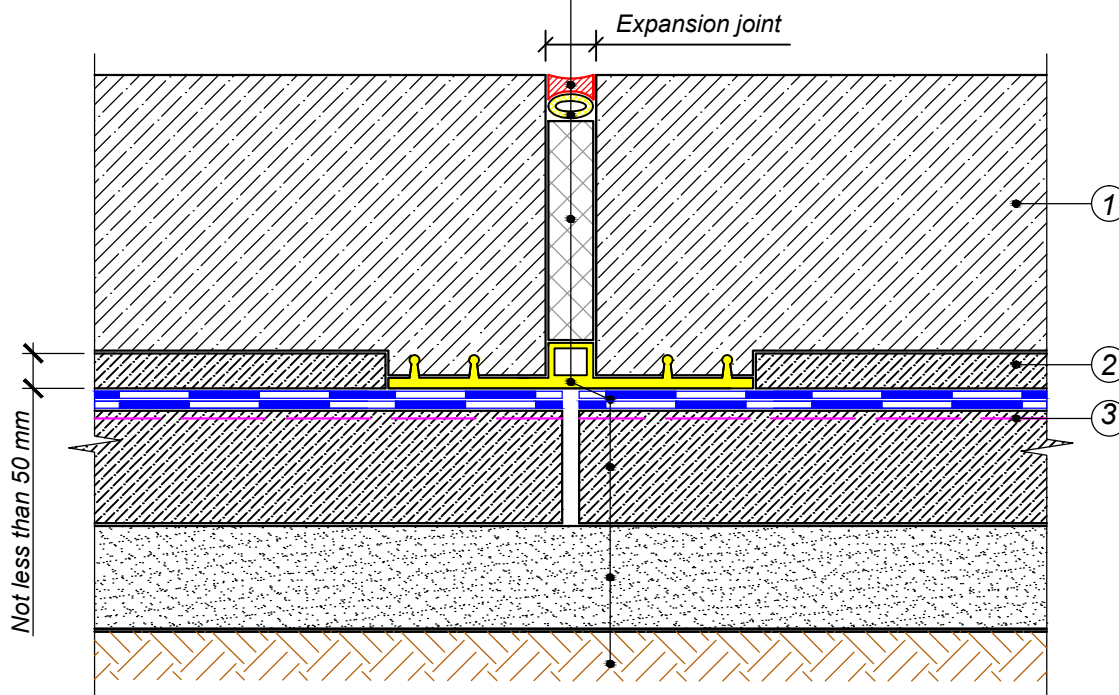




- Polyurethane sealant
- Sealing cord of polyethylene foam
- Extruded polystyrene CARBON PROF 300
- Side bitumen-compatible waterstop
- Underlay waterproofing bitumen membrane - 2 layers
- Concrete blinding
- Compacted leveling sand cushion
- Compacted soil foundation



- ① Foundation slab
- ② Protective sand-cement screed
- ③ Bitumen primer TechnoNICOL No. 01

REV.	DATE	DESCRIPTION	CHECKED	FOUNDATION WITH DRAINAGE	DESIGN	APPROVED
				HORIZONTAL EXPANSION JOINT WITH SIDE WATERSTOP	SCALE	DATE
					DWG No.	REV.