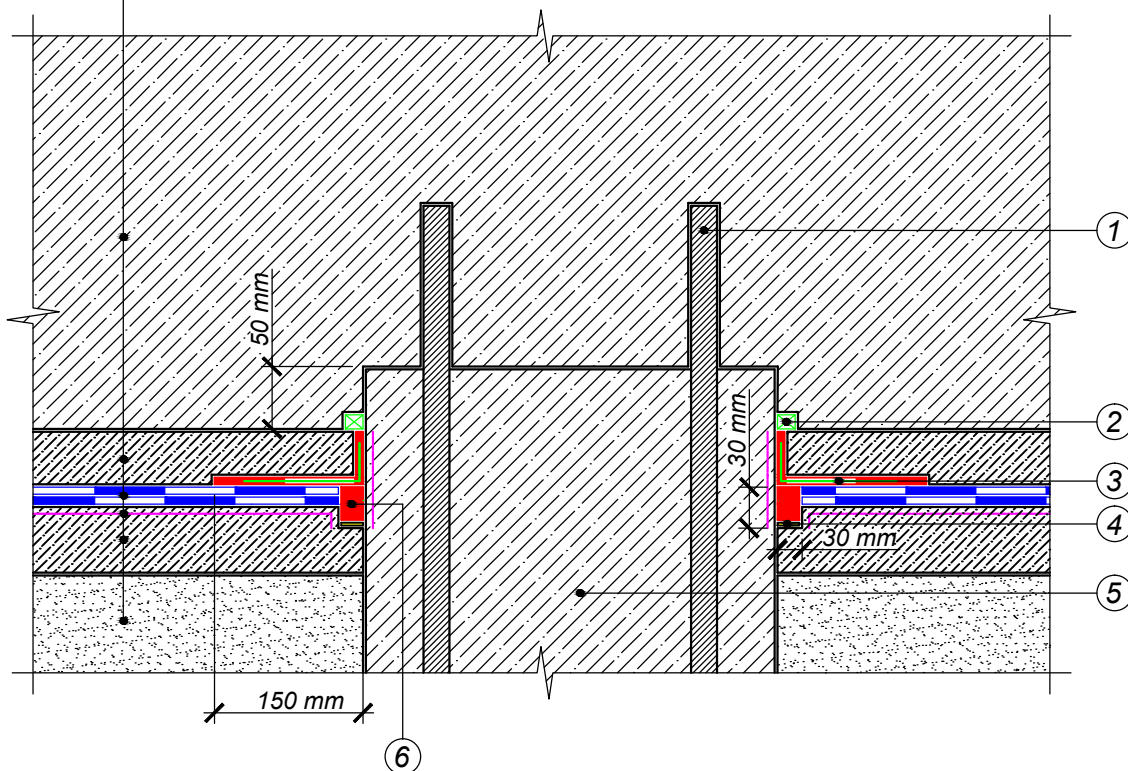




- Foundation slab
- Protective sand-cement screed
- Underlay waterproofing bitumen membrane - 2 layers
- Bitumen primer TechnoNICOL No. 01
- Concrete blinding
- Compacted leveling sand cushion



- ① Protruding bars
- ② Swelling cord
- ③ Fiber-glass mesh reinforced mastic TechnoNICOL No. 21
- ④ Anti-adhesion pad (e.g. asphalt felt strip)
- ⑤ Pile
- ⑥ Polymer-bitumen sealant

\* - before applying mastic it is necessary to melt protective film on Underlay bitumen membrane.

				FOUNDATION WITH DRAINAGE	DESIGN	APPROVED
					SCALE	DATE
REV.	DATE	DESCRIPTION	CHECKED	JUNCTION TO PILE HEAD	DWG No.	REV.